

- LEGEND**
- P.B.C. = PALM BEACH COUNTY
  - NO. = NUMBER
  - P.U.D. = PLANNED UNIT DEVELOPMENT
  - ± = MORE OR LESS
  - R = ARC LENGTH
  - Δ = CENTRAL ANGLE
  - R = RADIUS
  - CL = CENTERLINE
  - D.U. = DWELLING UNIT
  - P.L.S. = PROFESSIONAL LAND SURVEYOR
  - P.R.M. = PERMANENT REFERENCE MONUMENT
  - P.O.B. = POINT OF BEGINNING
  - SEC = SECTION
  - O.R.B. = OFFICIAL RECORD BOOK
  - A.I.D. = ACME IMPROVEMENT DISTRICT

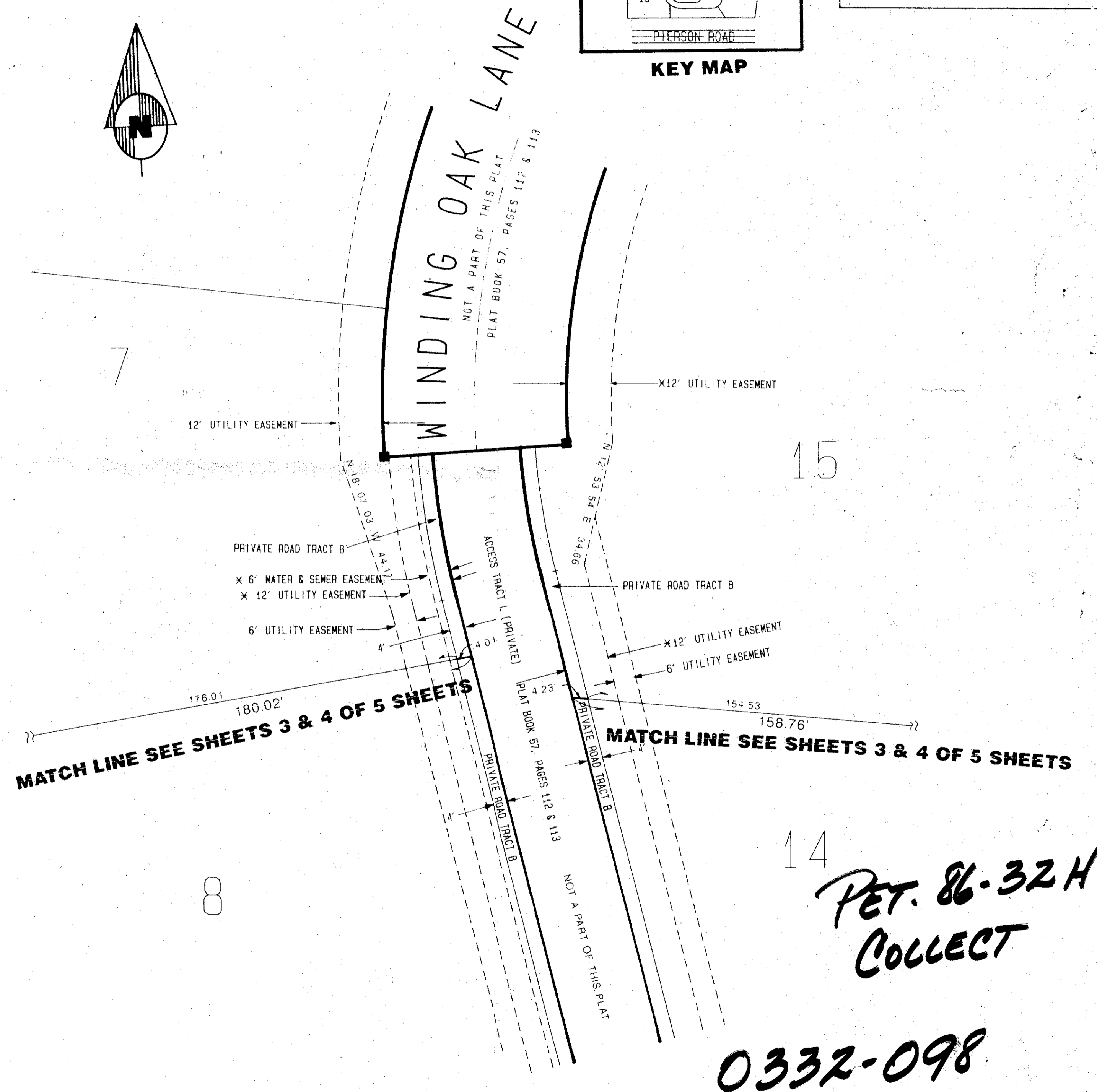
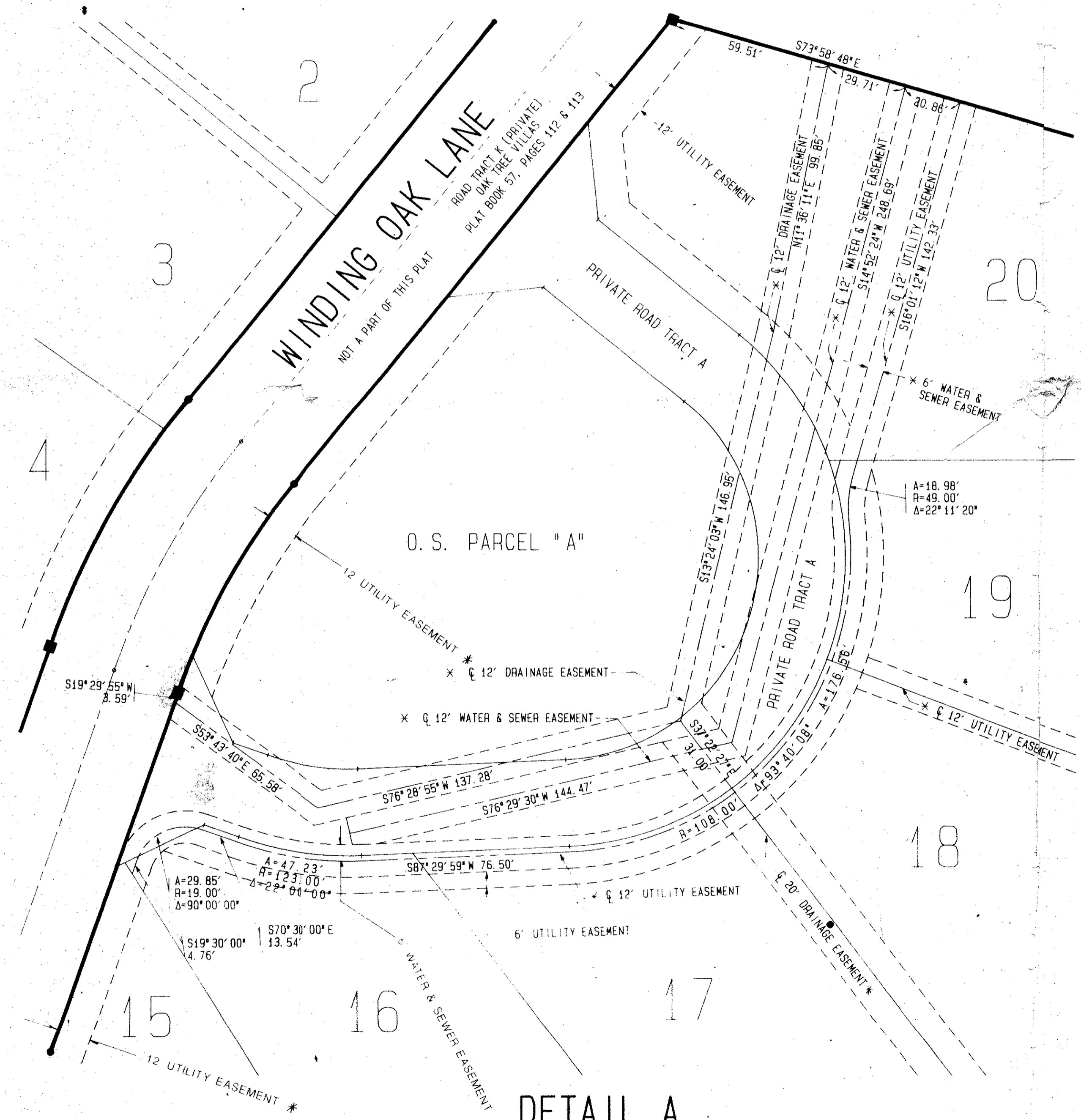
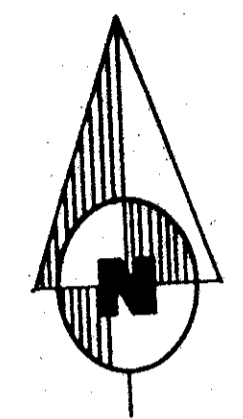
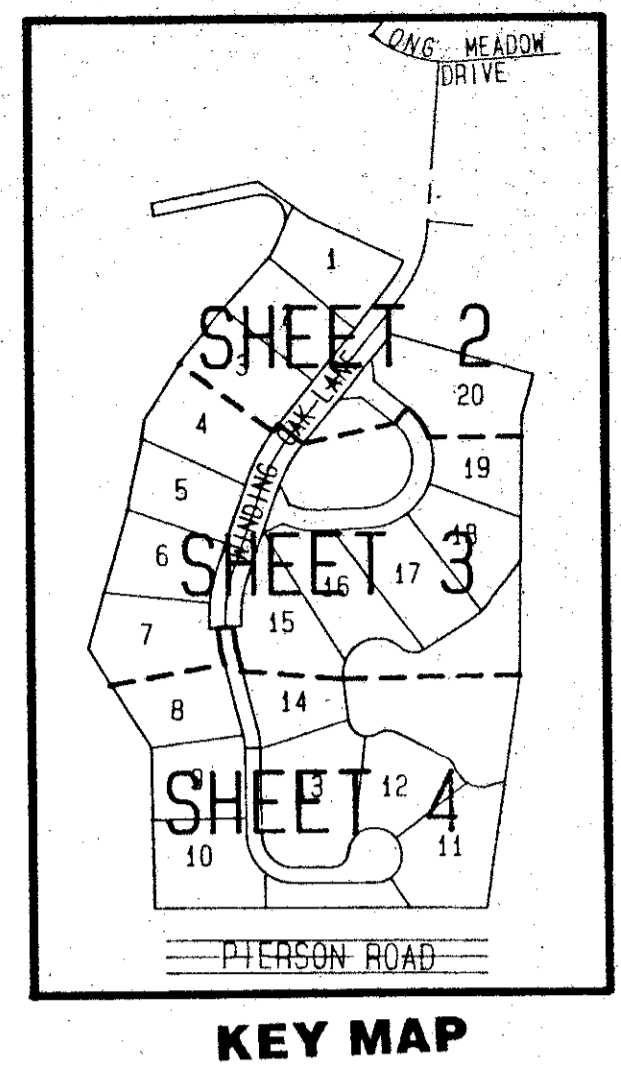
# WINDING OAKS

## OF PALM BEACH POLO AND COUNTRY CLUB WELLINGTON - P. U. D.

BEING A REPLAT OF PARCELS C, D, E, F AND J OF OAK TREE VILLAGES OF PALM BEACH POLO AND COUNTRY CLUB, WELLINGTON P.U. AS RECORDED IN PLAT BOOK 57, PAGES 112 AND 113 OF THE PUBLIC RECORDS OF PALM BEACH COUNTY FLORIDA AND OTHER LANDS.

LYING IN PART OF SECTION 14  
TOWNSHIP 44 SOUTH, RANGE 41 EAST  
PALM BEACH COUNTY, FLORIDA

SHEET 5 OF 5 SHEETS  
MAY 1191



TAZ # 730

SUBDIVISION \* WINDING OAKS OF PALM BEACH  
BOOK 57 PAGE 119  
FLOOD ZONE A-1  
ZONING AR  
ZIP CODE 33419  
PUD NAME WINDING OAKS

PET. 86-32 H  
COLLECT

0332-098

68/149

WINDING OAKS

**Dailey-Fotony, inc.**  
land surveyors, planners, engineers  
5050 10th Avenue North, Suite B - Lake Worth, Florida 33463-2602  
Phone 407-965-8787